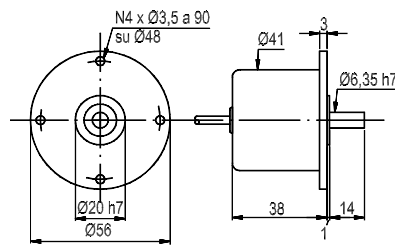


ENCODER INCREMENTALI ECONOMICI - LOW COST INCREMENTAL ENCODERS

Questi encoder si distinguono per le elevate caratteristiche abbinato ad un prezzo eccezionalmente basso.

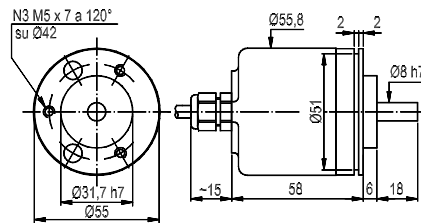
These encoders distinguish themselves for their highly reliable characteristics matched to an exceptional low price.

E6E



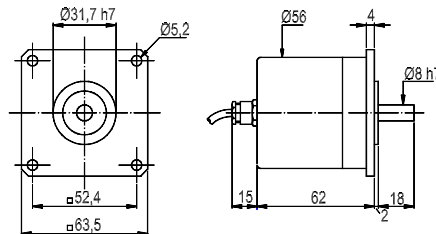
Peso: circa 180 g.
Protezione: IP64
Conn. Assiali o radiali: cavo
Elettronica: standard, line driver, push pull
Alimentazione: 5V,8 ÷ 24V,18 ÷ 28V
N° Impulsi: 600
Weight: about 180g.
Protection: IP64
Radial and Axial conn.: cable
Electronics: standard, line driver, push pull
Power supply: 5V,8 ÷ 24V,18 ÷ 28V
Pulses/rev.: 600

W5



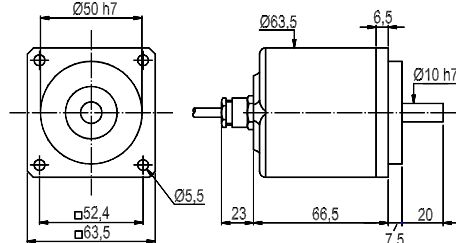
Peso: circa 300 g.
Protezione: IP64
Conn. Assiali o radiali: cavo
Elettronica: standard, line driver, push pull
Alimentazione: 5V,8 ÷ 24V,18 ÷ 28V
N° Impulsi: 1000
Weight: about 300 g.
Protection: IP64
Radial and Axial conn.: cable
Electronics: standard, line driver, push pull
Power supply: 5V,8 ÷ 24V,18 ÷ 28V
Pulses/rev.: 1000

W6



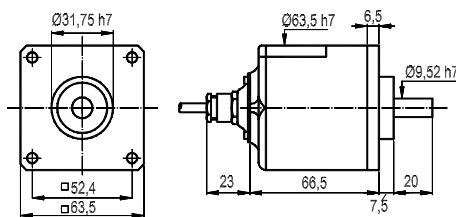
Peso: circa 380 g.
Protezione: IP64
Conn. Assiali o radiali: cavo
Elettronica: standard, line driver, push pull
Alimentazione: 5V,8 ÷ 24V,18 ÷ 28V
N° Impulsi: 1000
Weight: about 380 g.
Protection: IP64
Radial and Axial conn.: cable
Electronics: standard, line driver, push pull
Power supply: 5V,8 ÷ 24V,18 ÷ 28V
Pulses/rev.: 1000

F3TE



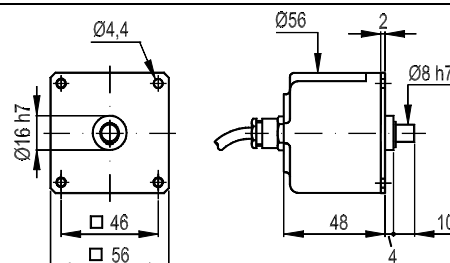
Peso: circa 500 g.
Protezione: IP65
Conn. Assiali o radiali: cavo o connettore
Elettronica: standard, line driver, push pull
Alimentazione: 5V,8 ÷ 24V,18 ÷ 28V
N° Impulsi: 1024
Weight: about 500 g.
Protection: IP65
Radial and Axial conn.: cable or connector
Electronics: standard, line driver, push pull
Power supply: 5V,8 ÷ 24V,18 ÷ 28V
Pulses/rev.: 1024

F3E



Peso: circa 500 g.
Protezione: IP65
Conn. Assiali o radiali: cavo o connettore
Elettronica: standard, line driver, push pull
Alimentazione: 5V,8 ÷ 24V,18 ÷ 28V
N° Impulsi: 3600
Weight: about 500 g.
Protection: IP65
Radial and Axial conn.: cable or connector
Electronics: standard, line-driver, push-pull
Power supply: 5V,8 ÷ 24V,18 ÷ 28V
Pulses/rev.: 3600

E6QE



Peso: circa 120 g.
Protezione: IP53
Conn. Assiali o radiali: cavo o connettore
Elettronica: standard, line driver, push pull
Alimentazione: 5V,8 ÷ 24V,18 ÷ 28V
N° Impulsi max.: 600
Weight: about 120g.
Protection: IP53
Radial and Axial conn.: cable or connector
Electronics: standard, line-driver, push-pull
Power supply: 5V,8 ÷ 24V,18 ÷ 28V
Max. pulses/rev.: 600